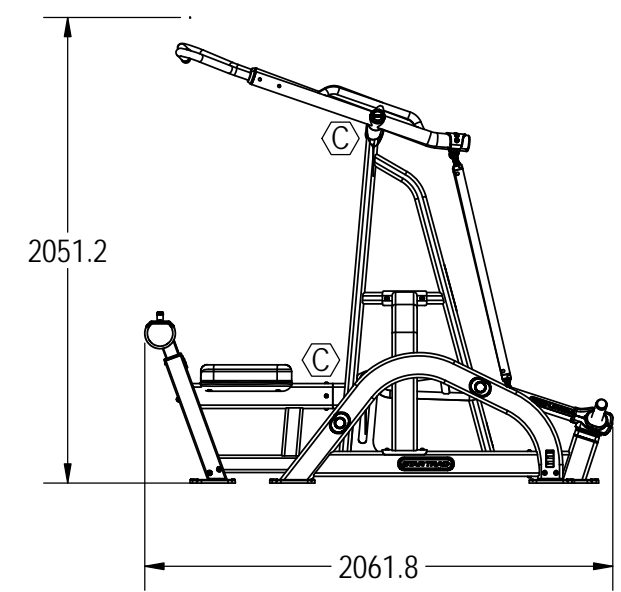
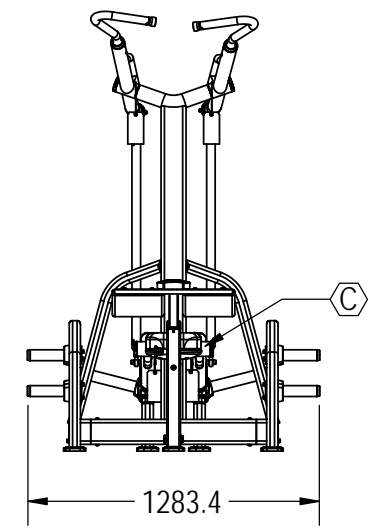
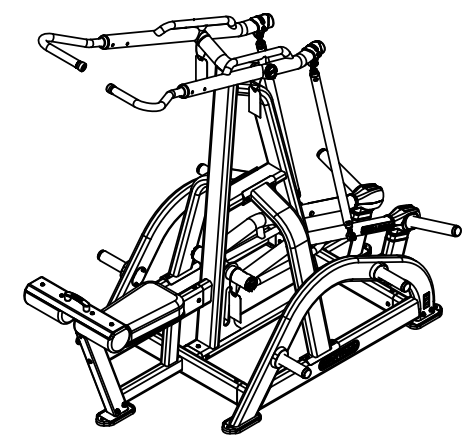
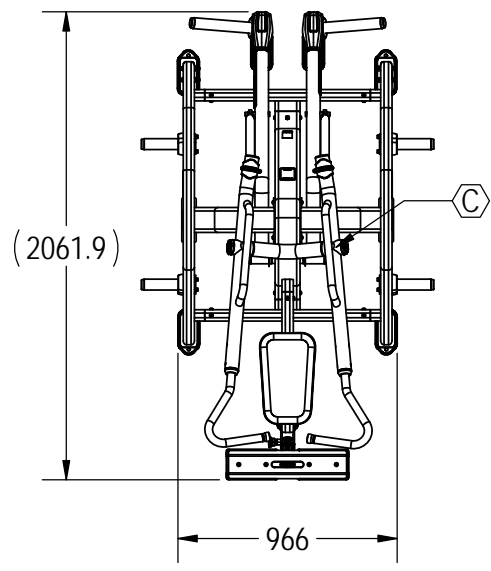


- NOTES:
- ASSEMBLE AND INSPECT PER SOP 620-7918.
 - COLOR DICTATED BY THE SALES ORDER.
 - COLOR: -XX COLOR DESIGNATOR AS SPECIFIED IN SOP 620-8222.
 - THE -XX CAN RESULT IN ONE COLOR FOR THE METAL SHROUD AND A DIFFERENT COLOR FOR THE METAL FRAME ALSO WITH A -XX LISTED ON THE BOM.
 - THE -00XX IS THE COLOR DESIGNATOR FOR UPHOLSTERY.
 - THE 5TH DESIGNATOR: "X" WITHIN -XXXXX DEFINES THE HEAD STRAP OR CUSTOM PRODUCTS BRAND. THIS IS SPECIFIED ON SALES ORDERS.
 - THE -XXXXX IS CREATED BY COMBINING THE -XX, -00XX AND THE 5TH DESIGNATOR. ALL X'S SHOULD BE DEFINED ON THE SALES ORDER.

| REVISION HISTORY | | | | |
|------------------|-----------|---|-------|-----|
| REV | DATE | DESCRIPTION | ECO | BY |
| -- | 111/11 | RELEASED @ LAND AMERICA | | LA |
| A | 5/31/2012 | RELEASED DRAWINGS FOR PRODUCTION | 13740 | KEY |
| B | 2/3/2014 | UPDATED MODEL TO PRODUCTION LEVEL | 14537 | PG |
| C | 9/4/2014 | ADDED CASTLE NUT, COTTER PIN, SETSCREWS | 14765 | PG |



DOCUMENT STATUS:

NOTICE OF PROPRIETARY INFORMATION
THIS DOCUMENT SHALL NOT BE REPRODUCED NOR SHALL THE INFORMATION CONTAINED HEREIN BE USED BY OR DISCLOSED TO OTHER EXCEPT AS EXPRESSLY AUTHORIZED BY CORE HEALTH & FITNESS, LLC.

| CLASS OF WORK | UNLESS OTHERWISE SPECIFIED DIMS ARE IN mm. TOLERANCES FOR MEASURE OF LENGTH ARE: | | | | | | | ANGLES = ±2° | | |
|---------------|--|----------|-----------|-------------|--------------|---------------|----------------|--------------|--|--|
| | 0.5 to 3 | > 3 to 6 | > 6 to 30 | > 30 to 120 | > 120 to 400 | > 400 to 1000 | > 1000 to 2000 | > 2000 | | |
| FINE | ±0.05 | ±0.05 | ±0.1 | ±0.15 | ±0.2 | ±0.3 | ±0.5 | ---- | | |
| MEDIUM | ±0.1 | ±0.1 | ±0.2 | ±0.3 | ±0.5 | ±0.8 | ±1.2 | ±2 | | |
| COARSE | ±0.2 | ±0.3 | ±0.5 | ±0.8 | ±1.2 | ±2 | ±3 | ±4 | | |
| VERY COARSE | ---- | ±0.5 | ±1 | ±1.5 | ±2.5 | ±4 | ±6 | ±8 | | |

MATERIAL
SEE BOM

FINISH
-

VENDOR: _____ P/N: _____

| THIRD ANGLE PROJECTION | | |
|------------------------|---------|---------|
| | INITIAL | DATE |
| DRAWN | KEY | 5/31/12 |
| CHECKED | | |
| APPROVED | | |
| | U.O.M. | MM |

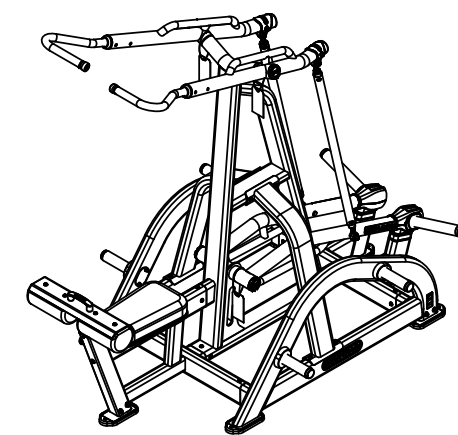
CORE HEALTH & FITNESS, LLC
4400 NE 77th Ave., Suite 300
Vancouver, WA 98662

CORE PART NO: IP-L3003-XXXXX REV: C

TITLE: LEVERAGE, LAT PULL DOWN

SCALE: 1:33.3 SHEET 1 OF 7 SHEET SIZE: B

| 9 | 8 | | | 7 | 6 | 5 | | | 4 | 3 | 2 | 1 |
|---|----------|---------------|---|---------------|---|----------|--------------|---------------------------------------|---------------|---|---|---|
| J | ITEM NO. | PART NUMBER | DESCRIPTION | Default/ QTY. | | ITEM NO. | PART NUMBER | DESCRIPTION | Default/ QTY. | | J | |
| | 1 | 050-2125-10 | STICKER,SERIAL NUMBER,BENCHES | 1 | | 46 | 731-2683-XX | WELDMENT,FR FRAME,LAT | 1 | | | |
| | 2 | 110-3402 | SCREW, #8-18, 3/4", HI-LOW, PHT, PH, CS, BO | 6 | | 47 | 731-2691-XX | WELDMENT,MID FRAME,LAT | 1 | | | |
| | 3 | 731-0033 | NUT, RIVET,M8 X 1.25 | 12 | | 48 | 731-2696-XX | WELDMENT,REAR,LAT | 1 | | | |
| | 4 | 731-0173-00XX | ASSY,KNEE PAD,STD | 2 | | 49 | 731-2700-XX | WELDMENT,LAT ARM,RIGHT | 1 | | | |
| I | 5 | 731-0195 | ASSY, HANDLE ADJ, STARTRAC | 1 | | 50 | 731-2703-XX | WELDMENT,LAT ARM,LEFT | 1 | | | |
| | 6 | 731-0225 | SCREW,M3.5 X 9.5,SELF TAPPING | 4 | | 51 | 731-2705 | WELDMENT,LINK,LAT | 6 | | | |
| | 7 | 731-0335 | STICKER, MADE IN CHINA, IP | 1 | | 52 | 731-2709-XX | WELDMENT,THIGH PAD SLIDER | 1 | | | |
| | 8 | 731-0350 | Screw, M10X1.5, 25mm, SHC, HK | 2 | | 53 | 731-2712-XX | WELDMENT,FOOT,SMALL TUBE | 1 | | | |
| H | 9 | 731-0355 | WASHER,PLAIN,M8,NARROW | 53 | | 54 | 731-2755 | LEVERAGE LOGO | 2 | | | |
| | 10 | 731-0359 | SCREW,M8 X 1.25,25mm,BHC,HK | 38 | | 55 | 731-2756 | DBL STICK TAPE,LEVERAGE,LOGO | 2 | | | |
| | 11 | 731-0363 | NUT,M10X1.5,NYLOC | 6 | | 56 | 731-2762 | RUBBER BUMPER | 2 | | | |
| | 12 | 731-0365 | NUT,M8 X 1.25,NYLOC JAM | 10 | | 57 | 731-2849-001 | PLACARD,LAT PULL DOWN,LEVERAGE 2 | 1 | | | |
| | 13 | 731-0367 | WASHER,PLAIN,M10 | 18 | | 58 | 731-2850 | STICKER,ADJ,1-8,LEV | 1 | | | |
| | 14 | 731-0421 | SCREW, M8 X 1.25, 30MM, SHC, HK, CS | 4 | | 59 | 731-2855 | CAP END 60MM TUBE | 2 | | | |
| G | 15 | 731-0517 | STICKER, WARNING, BOLT DOWN | 1 | | 60 | 731-2856 | PLASTIC WEIGHT HORN COVER TRIM INSERT | 2 | | | |
| | 16 | 731-0561 | WASHER,M8,1MM THK | 4 | | 61 | 731-2857 | PLASTIC WEIGHT HORN COVER TOP | 1 | | | |
| | 17 | 731-0582 | SETSCREW, M8 X 1.25, 10mm, CUP | 4 | | 62 | 731-2858 | PLASTIC WEIGHT HORN COVER BOTTOM | 1 | | | |
| | 18 | 731-0635-00XX | ASSY, SEAT BOTTOM, ROW | 1 | | 63 | 731-2866 | PLASTIC,WEIGHT HORN COVER, TOP | 1 | | | |
| F | 19 | 731-0637 | RING,BEAUTY,ADJ,PAD | 1 | | 64 | 731-2867 | PLASTIC,WEIGHT HORN COVER BOTTOM | 1 | | | |
| | 20 | 731-0638 | SUPPORT,TUBE,ADJ,CHEST | 1 | | 65 | 731-2916 | PLASTIC,BACK/SEAT,LEVERAGE | 1 | | | |
| | 21 | 731-0652 | ASSY,PULL PIN,ADJ,RED | 1 | ⊕ | 66 | 731-2969 | WASHER,M16,NP | 4 | | | |
| | 22 | 731-0842 | ASSY, BRG, TAPER, 30205 | 4 | | 67 | 731-3080 | WELDMENT, SIDE SUPPORT, LEVERAGE | 2 | | | |
| | 23 | 731-1448 | NUT,M8x1.25,ACORN | 2 | | 68 | 731-5256 | WELD,WEIGHT HORN,SINGLE | 4 | | | |
| E | 24 | 731-1450 | SCREW,M8 X 1.25,75mm,SHC,HK,AS,ZP | 16 | | 69 | 731-5259 | BUMPER,STOP,WGT | 6 | | | |
| | 25 | 731-1456-01 | PLATE,MOUNT,WGT HOLDER,BLANK | 4 | | 70 | 731-5272 | CAP,PLUG,WEIGHT HORN,BLANK | 6 | | | |
| | 26 | 731-1462 | SCREW,M8 X 1.25,80mm,BHC,HK,AS, NKL | 2 | | 71 | 731-5777 | TAG, LEVERAGE, SHAFT, TAB WASHER | 4 | | | |
| | 27 | 731-2079 | SCREW,M4 X .7,8MM,SHC,HK,NP | 2 | | 72 | 731-5806 | WASHER,M8,HAT | 4 | | | |
| | 28 | 731-2080 | BUMPER,ADJ,HYPER | 1 | | 73 | 731-5960 | TWIST TIE | 4 | | | |
| D | 29 | 731-2416 | STICKER,STARTRAC,70MM,DECO | 2 | | 74 | 731-5982-XX | WELDMENT,WT FRAME,L,LAT | 1 | | | |
| | 30 | 731-2590 | END CAP,BEARING, SEAL, | 4 | | 75 | 731-5983-XX | WELDMENT,WEIGHT ARM,SHOLDER,RIGHT | 1 | | | |
| | 31 | 731-2591 | O-RING 30X3.55-A | 7 | | 76 | 731-5984-XX | WELDMENT,WT FRAME,RT,LAT | 1 | | | |
| | 32 | 731-2592 | SEAL,HOUSING | 4 | | 77 | 731-5990-XX | WELDMENT,WEIGHT ARM,SHOULDER,LEFT | 1 | | | |
| | 33 | 731-2595 | TAPPER ROLLER BEARING, 30304 GB 297-94 | 4 | ⊕ | 78 | 731-6104 | Slotted Hex Nut,Low,M16X1.5mm | 4 | | | |
| C | 34 | 731-2606 | DIE CAST END CAP, L2 | 2 | ⊕ | 79 | 731-6107 | PIN, COTTER,3.2mmDIA x 32mm LONG | 4 | | | |
| | 35 | 731-2607 | WEDGE,END CAP, | 2 | ⊕ | 80 | 731-6430 | BAR, PIVOT AXLE, L2, LONG | 4 | | | |
| | 36 | 731-2609 | BASE,HANDLE GRIP,ARMS,L2 | 2 | | | | | | | | |
| | 37 | 731-2610 | PLATE,BENT,PIVOT RING | 2 | | | | | | | | |
| B | 38 | 731-2614 | BALL JOINT, MALE, LEVERAGE | 4 | | | | | | | | |
| | 39 | 731-2616 | NUT,JAM,M16X2.0 | 4 | | | | | | | | |
| | 40 | 731-2622 | BAR,BUSHING,MISS-ALIGNMENT | 4 | | | | | | | | |
| | 41 | 731-2624 | SHOULDER BOLT B18.3.3M-10X40 SHCC | 2 | | | | | | | | |
| A | 42 | 731-2639 | TRIM RING | 2 | | | | | | | | |
| | 43 | 731-2640 | WELD,FOOT,MAX RACK,RH | 2 | | | | | | | | |
| | 44 | 731-2647 | FOOT,LONG,LEVERAGE | 7 | | | | | | | | |
| | 45 | 731-2649 | LABEL, STAR TRAC,DECO,LARGE | 2 | | | | | | | | |

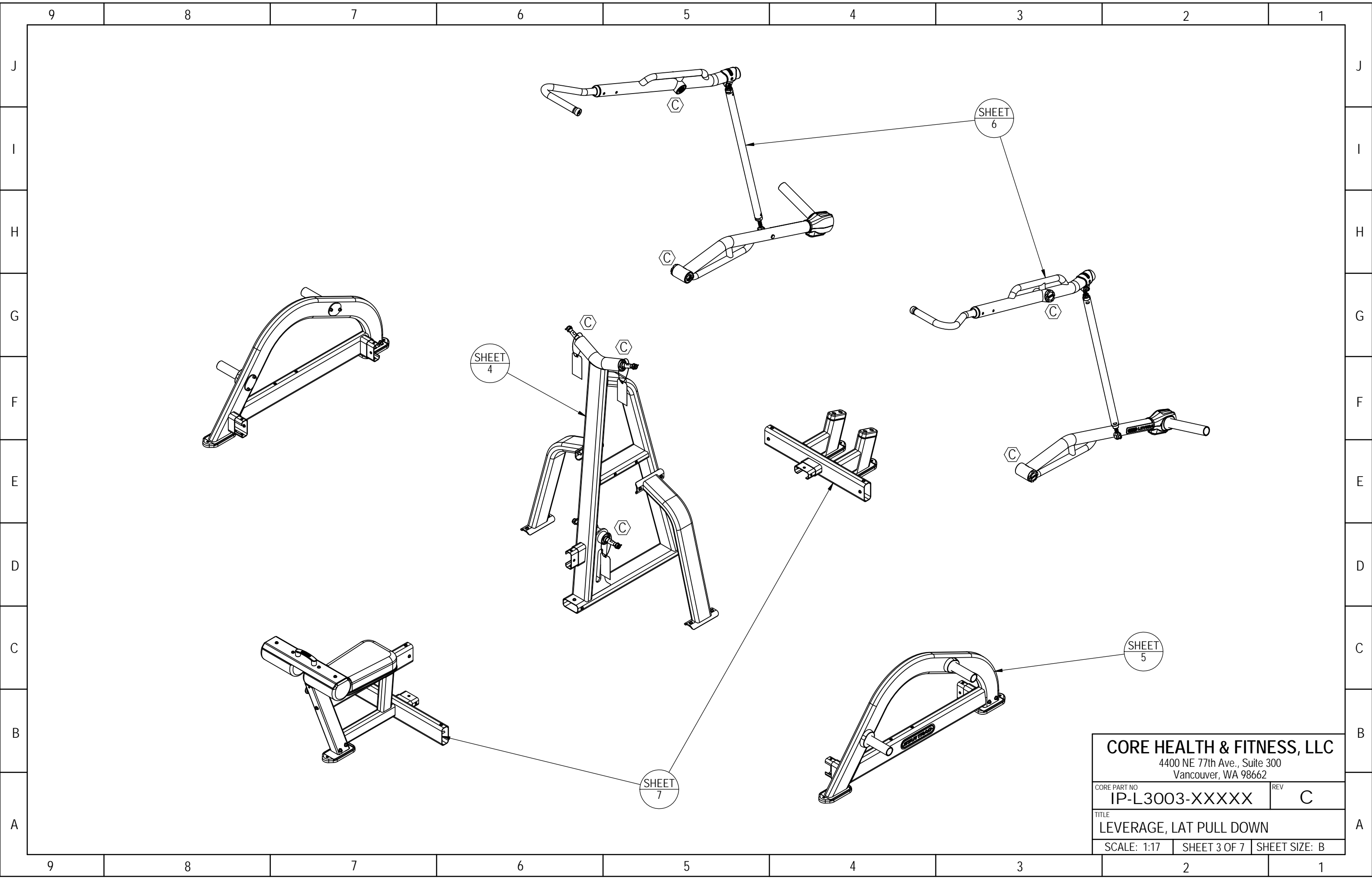


CORE HEALTH & FITNESS, LLC
4400 NE 77th Ave., Suite 300
Vancouver, WA 98662

CORE PART NO: IP-L3003-XXXXX REV: C

TITLE: LEVERAGE, LAT PULL DOWN

SCALE: 1:33.3 SHEET 2 OF 7 SHEET SIZE: B

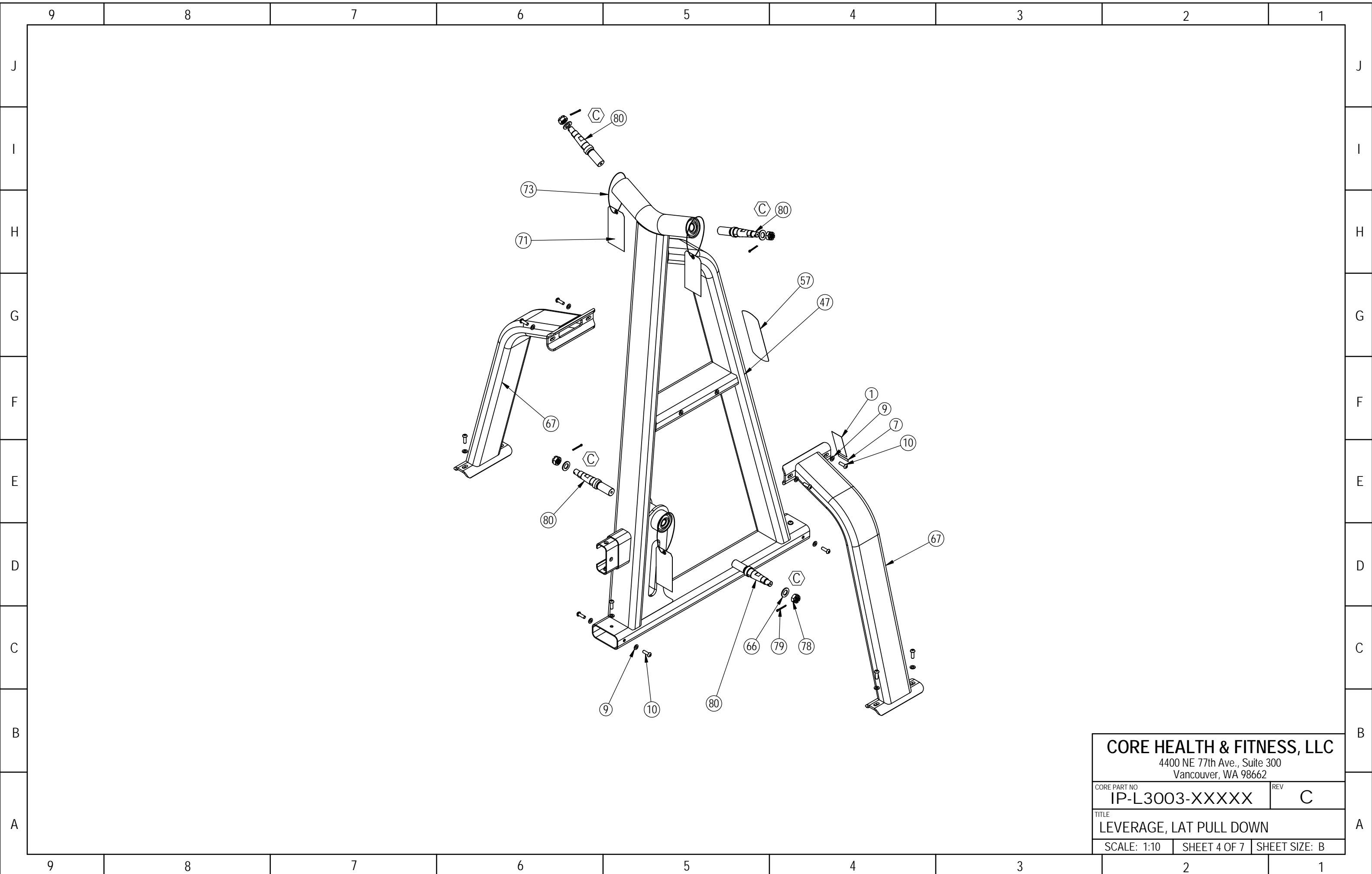


CORE HEALTH & FITNESS, LLC
 4400 NE 77th Ave., Suite 300
 Vancouver, WA 98662

| | |
|----------------|-----|
| CORE PART NO | REV |
| IP-L3003-XXXXX | C |

| |
|-------------------------|
| TITLE |
| LEVERAGE, LAT PULL DOWN |

| | | |
|-------------|--------------|---------------|
| SCALE: 1:17 | SHEET 3 OF 7 | SHEET SIZE: B |
|-------------|--------------|---------------|

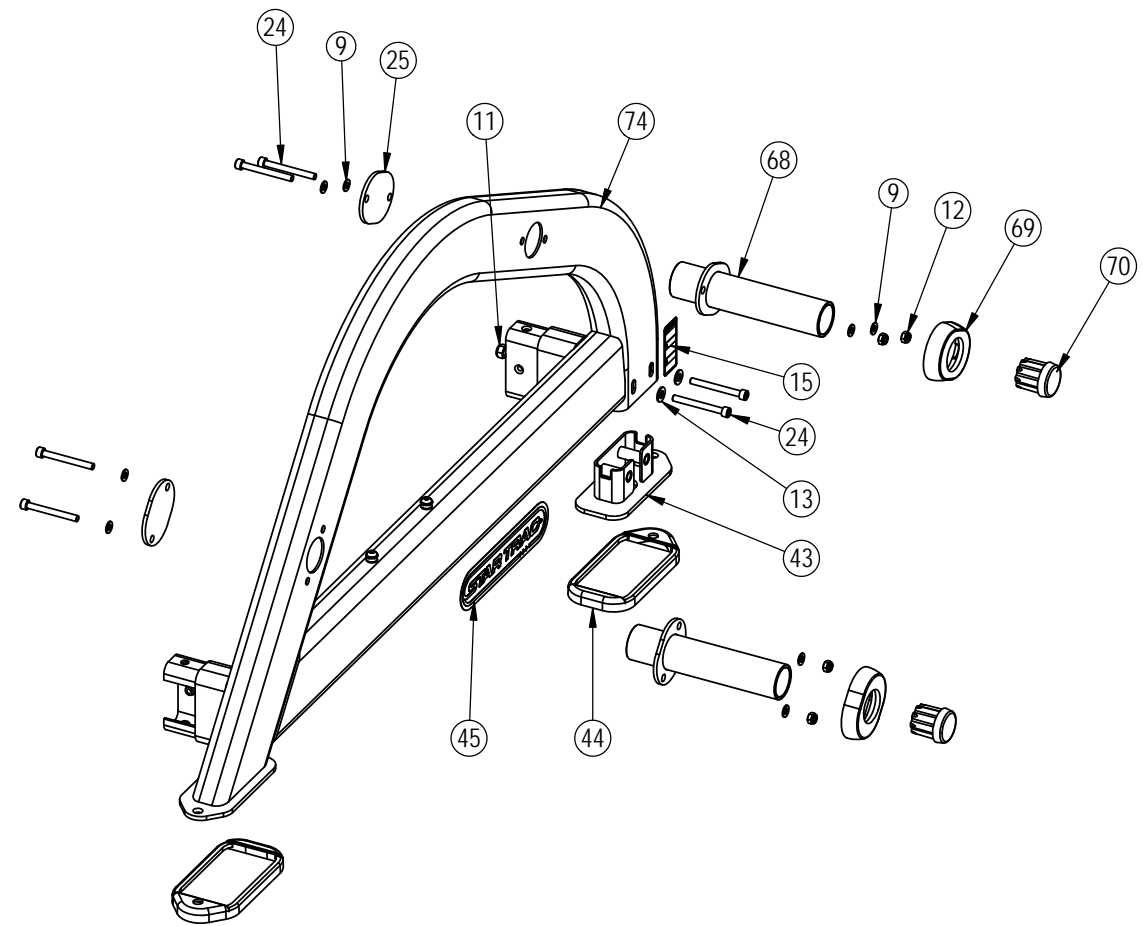
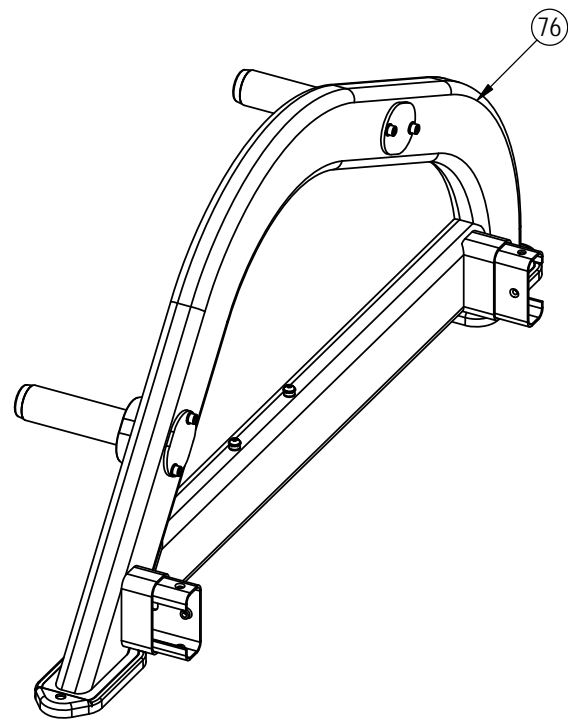


CORE HEALTH & FITNESS, LLC
 4400 NE 77th Ave., Suite 300
 Vancouver, WA 98662

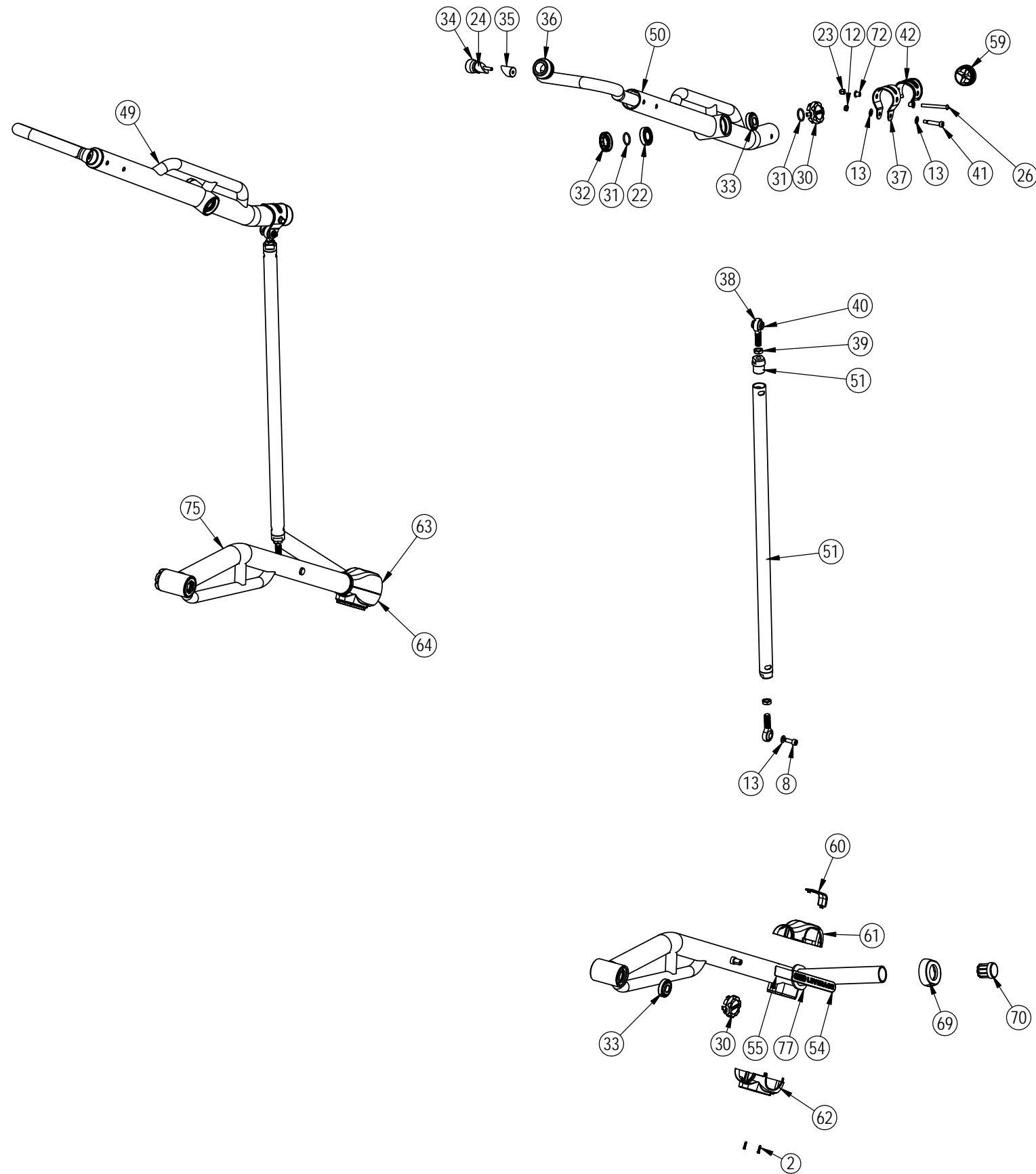
| | |
|----------------|-----|
| CORE PART NO | REV |
| IP-L3003-XXXXX | C |

TITLE
LEVERAGE, LAT PULL DOWN

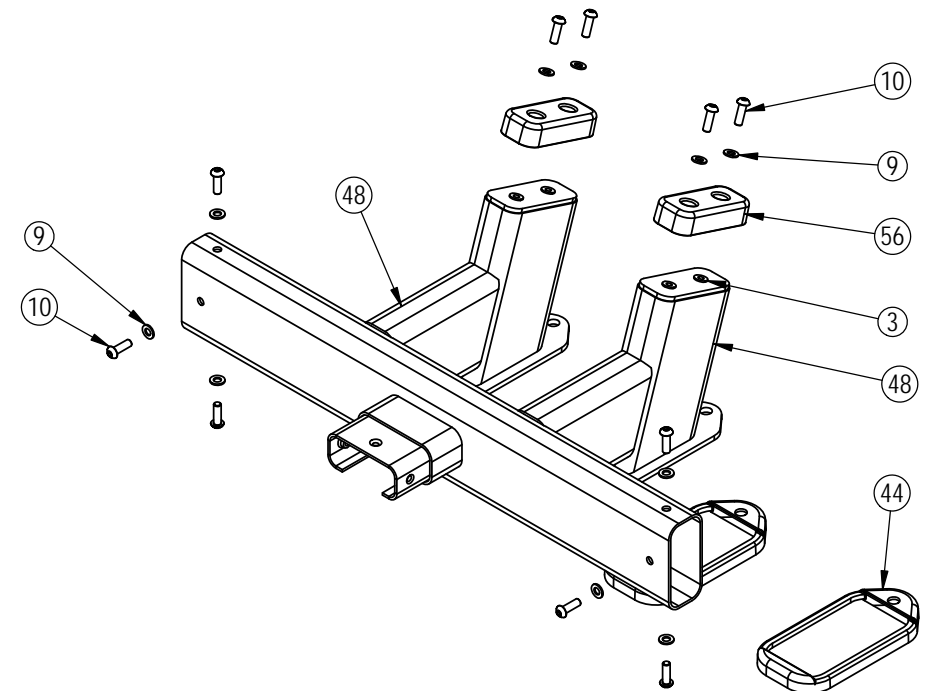
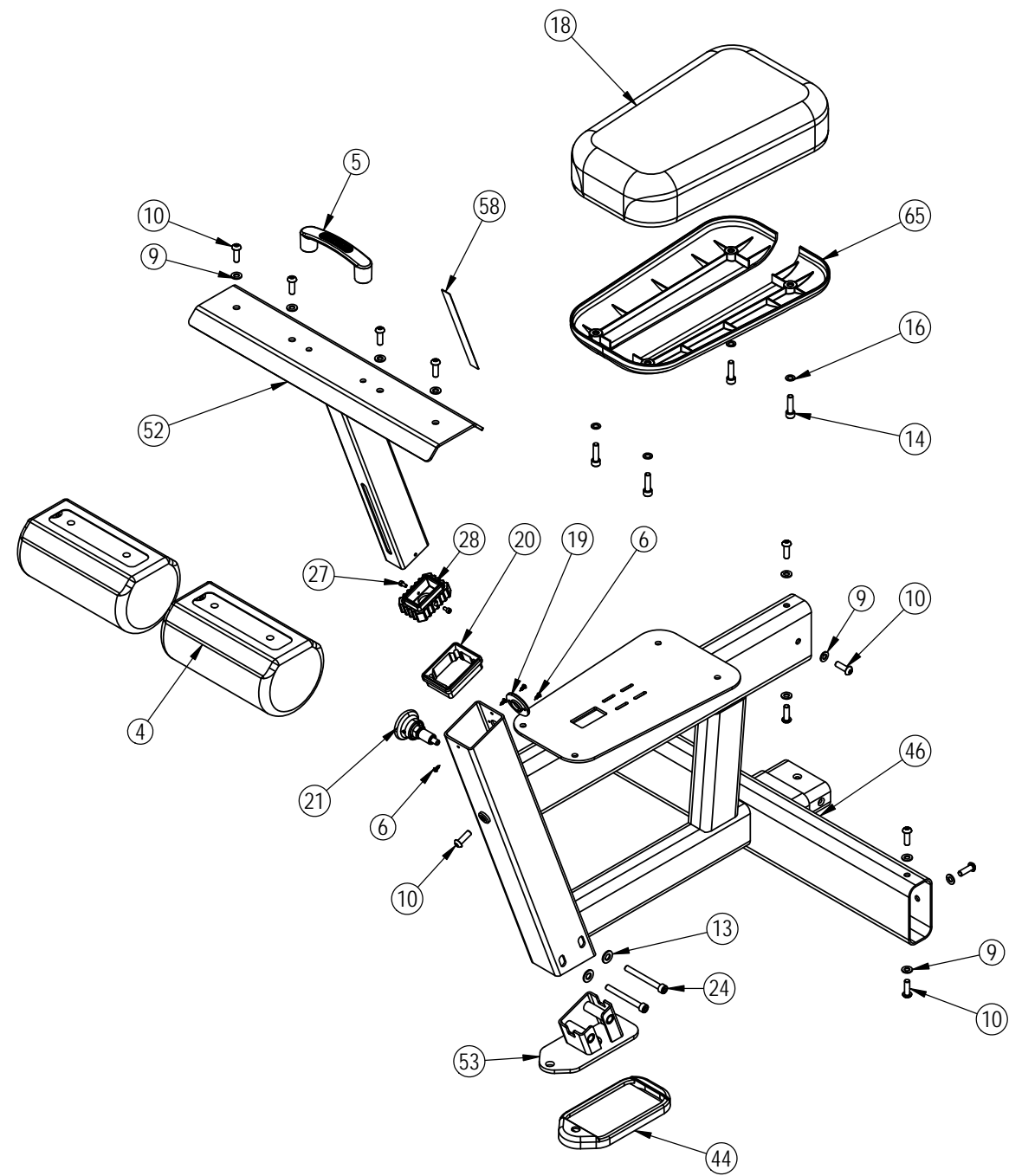
| | | |
|-------------|--------------|---------------|
| SCALE: 1:10 | SHEET 4 OF 7 | SHEET SIZE: B |
|-------------|--------------|---------------|



| | | |
|---|--------------|---------------|
| CORE HEALTH & FITNESS, LLC | | |
| 4400 NE 77th Ave., Suite 300 Vancouver, WA 98662 | | |
| CORE PART NO | REV | |
| IP-L3003-XXXXX | C | |
| TITLE | | |
| LEVERAGE, LAT PULL DOWN | | |
| SCALE: 1:10 | SHEET 5 OF 7 | SHEET SIZE: B |



| | | |
|---|--------------|---------------|
| CORE HEALTH & FITNESS, LLC | | |
| 4400 NE 77th Ave., Suite 300 Vancouver, WA 98662 | | |
| CORE PART NO | REV | |
| IP-L3003-XXXXX | C | |
| TITLE | | |
| LEVERAGE, LAT PULL DOWN | | |
| SCALE: 1:15 | SHEET 6 OF 7 | SHEET SIZE: B |



CORE HEALTH & FITNESS, LLC
 4400 NE 77th Ave., Suite 300
 Vancouver, WA 98662

| | | | |
|--------------|-------------------------|---------------|---|
| CORE PART NO | IP-L3003-XXXXX | REV | C |
| TITLE | LEVERAGE, LAT PULL DOWN | | |
| SCALE: 1:10 | SHEET 7 OF 7 | SHEET SIZE: B | |